

BDO LUXEMBOURG'S SUSTAINABILITY SERVICES



OUR SUSTAINABILITY SERVICES

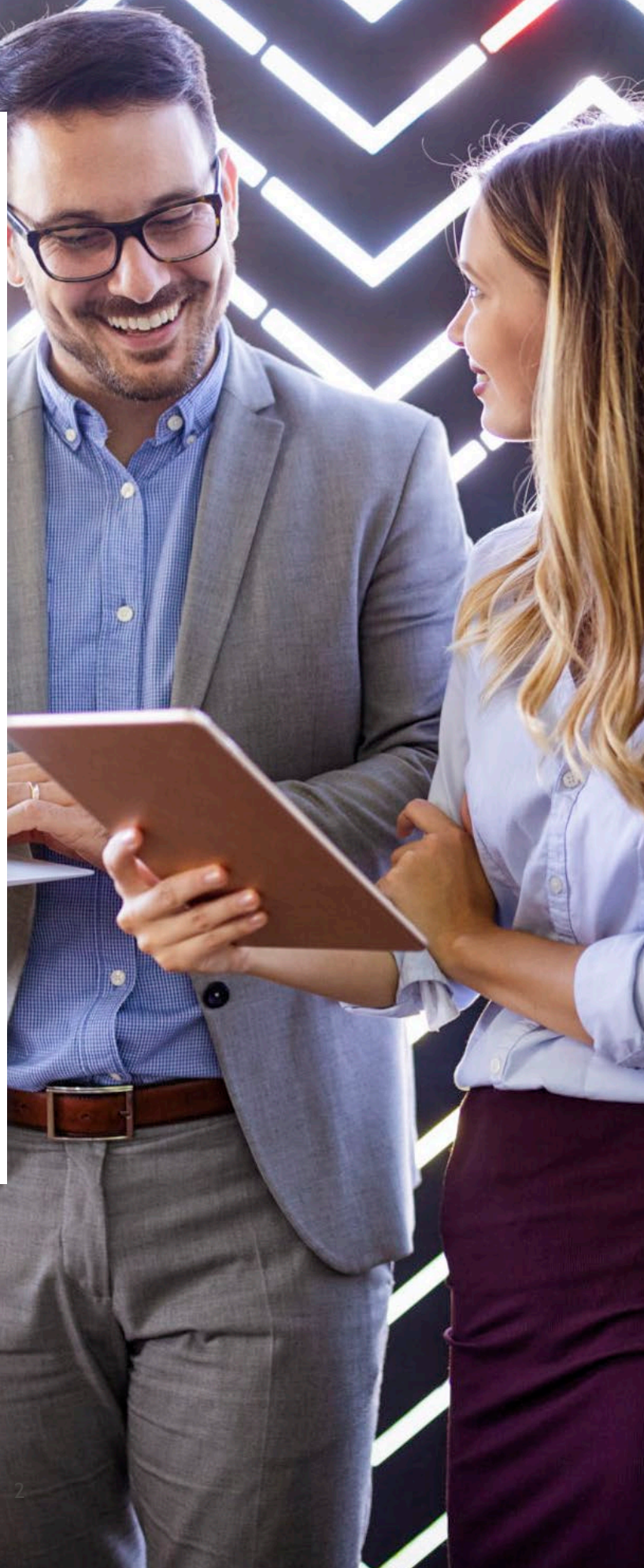
Your Vision, Our Impact-Driven Solutions

Our client-facing experts work with organisations to create real and positive change.

We do this by contributing to a more sustainable future through a range of services and tools to help clients in their own sustainability journeys.

In this fast-changing and rapidly evolving realm of sustainability, we aim to go above and beyond, ensuring that your sustainability efforts are not a quick, one-off, short-term solution, but one that molds a new culture with the right skills, capabilities and structure to enable this ESG transition.

We look at sustainability holistically with the aim to ingrain real solutions into business strategy and decision-making processes. We at BDO Luxembourg provide simplified and effective solutions to enable organizations to adopt sustainability and continue to flourish.



ESG REPORTING

- ▶ Internal and external ESG Reports
 - Annual Reports
 - Internal ESG data documentation
- ▶ ESG reporting to international standards
 - CSRD
 - SFDR
 - EU Taxonomy
 - UN Global Compact
 - SASB
 - GRI
 - TCFD
 - CSDDD
 - TNFD
 - ESRS
- ▶ CSRD Readiness
 - ESRS Gap Analysis and Alignment
 - Double Materiality
 - Report Development
- ▶ Long-term preparation of upcoming applicable standards
- ▶ Organisational and tool development for applicable regulations

STRATEGY

- ▶ Materiality Assessment
- ▶ ESG alignment with business strategy
- ▶ KPI/Targets/Metrics at all levels of the business
- ▶ Alignment with UN SDGs
- ▶ Benchmarking
- ▶ ESG Gap Analysis
- ▶ Change Management strategy and tools

CIRCULAR ECONOMY

- ▶ Value chain assessment and solutions
 - Identification of externalities
 - Gap Analysis on supply chain
- ▶ Customer/Vendor ESG strategic approach
 - Management aligned with ESG standards
 - Communication and marketing
- ▶ Life Cycle Assessment (LCA) gap analysis and strategy development

ASSURANCE

- ▶ Assurance of non-financial/sustainability reports
- ▶ Adherence to principals based on external and internal standards and codes of conduct
- ▶ ESG due diligence assessment
- ▶ Identification of gaps in reporting, limitations of current controls, and areas for improvement

RISK MANAGEMENT

- ▶ ESG Risk Identification and Mitigation roadmap
- ▶ Integration of ESG in investment risk assessments
- ▶ Climate risk assessments
- ▶ ICAAP/ILAAP

TRAININGS

- ▶ Tailored ESG trainings across all sustainability topics
- ▶ Tailored Board trainings
- ▶ Social Sustainability Training
 - Non-bias trainings
 - Anti-harrasment trainings
 - Leadership trainings
 - Diversity and Inclusion trainings
 - Human Rights trainings
- ▶ Environmental Trainings
 - Life Cycle Assessment trainings
 - Climate and emissions trainings

SUSTAINABLE FINANCE

- ▶ Green taxes and incentives
 - Advising
 - Identification
- ▶ Impact investing and analysis
- ▶ Application form preparation and tool development
- ▶ MiFID II support
- ▶ Sustainable finance related disclosure readiness
- ▶ Principle Adverse Impact measurement and analysis

IMPACT MEASUREMENT MANAGEMENT

- ▶ Incorporation of ESG in trade-off decisions
- ▶ Monitoring and management of operational processes
- ▶ Tailor-made DEI programs
- ▶ Support in obtaining B'Corp Label
- ▶ Support in obtaining local ESG label

SUSTAINABILITY AS A SERVICE

- ▶ Integrated sustainability and implementation into an organisation
- ▶ Long-term solutions and assistance for companies of all sizes
- ▶ Small scale but large impact solutions for start-ups and SMEs

NET ZERO TRANSITION

- ▶ Net Zero Roadmap and strategy
- ▶ SBTi readiness
- ▶ Innovation and technological solutions
- ▶ Energy transition and carbon accounting
- ▶ Climate reporting
- ▶ Environmental Impact Assessments
- ▶ Carbon offsetting valuation and assessments

SPACE SUSTAINABILITY

- ▶ Strategy development
- ▶ Earth Observation market analysis
- ▶ Debris mitigation solutions

INTERESTED?

Get in touch with our experts:

Sabrina Alam
Director
+352 45 123 622
sabrina.alam@bdo.lu

Jason Grbic
Consultant
+352 45 123 370
jason.grbic@bdo.lu

Maurice Schmit
Consultant
+352 45 123 867
maurice.schmit@bdo.lu

Elena McCarthy
Consultant
+352 45 123 685
elena.mccarthy@bdo.lu

Wilfried Kamga
Consultant
+352 45 123 859
Wilfried.kamga@bdo.lu







Key team expertise:

- ▶ Deep and technical knowledge and experience across CSRD implementation, SFDR, ESG strategy development, emissions reduction strategy development, circular economy, and trainings with academic professionals.
- ▶ Experts in **sustainable transition** incorporating change management, strategic outlook, and governance structure development, & tools for measurement and monitoring.

Experience across:

- ▶ EU Parliament & Commission
- ▶ European Investment Bank
- ▶ Luxembourg Chamber of Commerce
- ▶ Intergovernmental Institutions
- ▶ Local Municipalities
- ▶ CSSF (Financial Sector Supervisory Commission)
- ▶ International Industries
- ▶ Large Corporates
- ▶ SMEs and Start-Ups

We speak:

- ▶ English 
- ▶ French 
- ▶ German 
- ▶ Luxembourgish 
- ▶ Lithuanian 
- ▶ Mandarin 

BDO IN LUXEMBOURG

▼
Audit & Assurance

▼
Advisory

▼
Business Services & Outsourcing

▼
Tax



This publication has been carefully prepared, but it has been written in general terms and should be seen as containing broad guidance only.

This publication should not be used or relied upon to cover specific situations and you should not act, or refrain from acting, upon the information contained in this publication herein without obtaining specific professional advice.

Please contact the appropriate BDO Member Firm to discuss these matters in the context of your particular circumstances.

No entity of the BDO network, nor the BDO Member Firms or their partners, employees or agents accept or assume any liability or duty of care for any loss arising from any action taken or not taken by anyone in reliance on the information in this publication or for any decision based on it.

BDO is an international network of public accounting firms, the BDO Member Firms, which perform professional services under the name of BDO. Each BDO Member Firm is a member of BDO International Limited, a UK company limited by guarantee that is the governing entity of the international BDO network.

Service provision within the BDO network is coordinated by Brussels Worldwide Services BVBA, a limited liability company incorporated in Belgium with its statutory seat in Brussels.

Each of BDO International Limited (the governing entity of the BDO network), Brussels Worldwide Services BVBA and the member firms of the BDO network is a separate legal entity and has no liability for another such entity's acts or omissions. Nothing in the arrangements or rules of the BDO network shall constitute or imply an agency relationship or a partnership between BDO International Limited, Brussels Worldwide Services BVBA and/or the member firms of the BDO network.

BDO is the brand name for the BDO network and for each of the BDO Member Firms.

© 2024 BDO Advisory

All rights reserved.

www.bdo.lu

